

STØPERIET Ø
ST

SMIÅ

PLANTEGNINGER

BATE

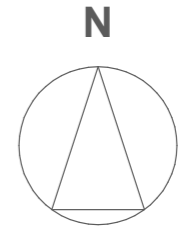
SMIÅ

VERFTET

FABRIKKEN



Situasjonsplan



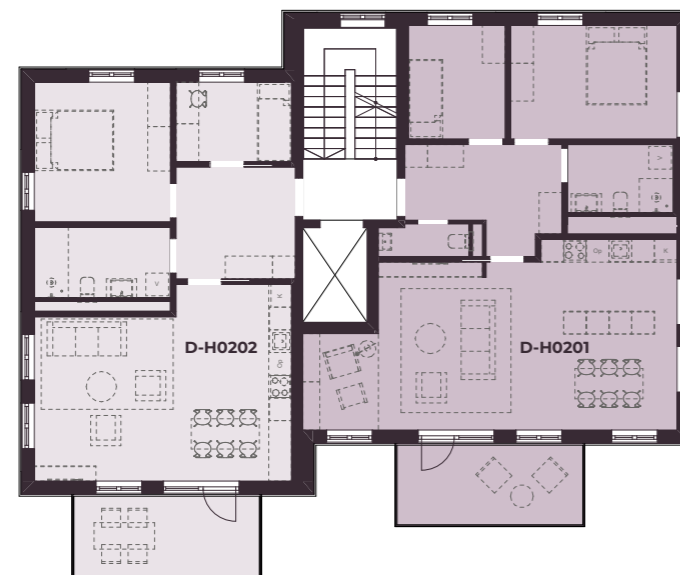
Etasjeplaner SMIÅ



1. etasje



3. etasje



2. etasje



4. etasje



D-H0101

SMIÅ



BRA-i: 67,1 m²

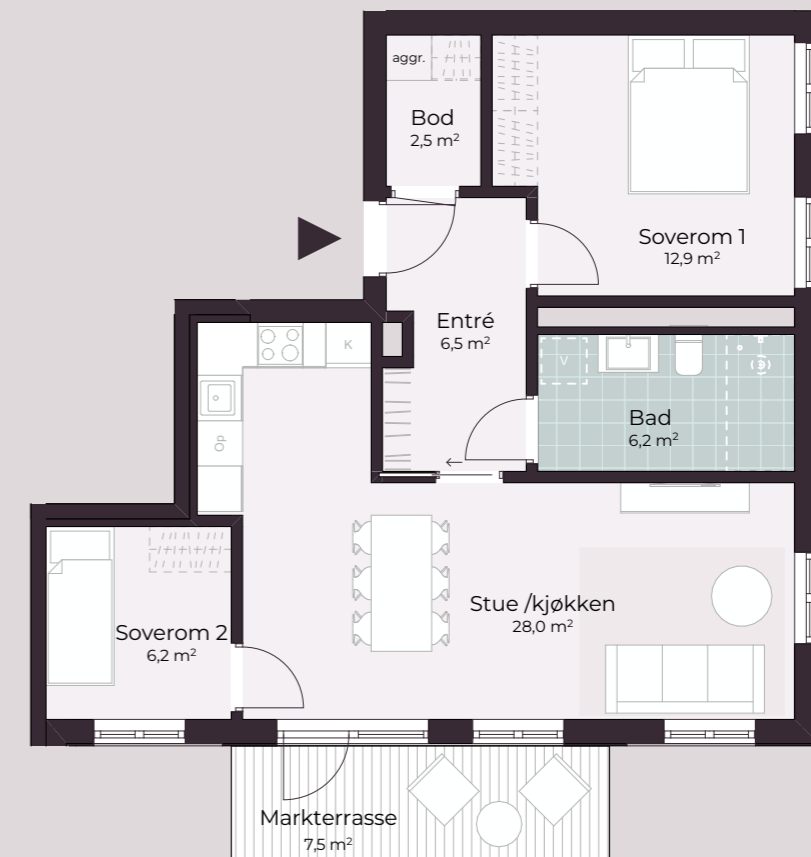
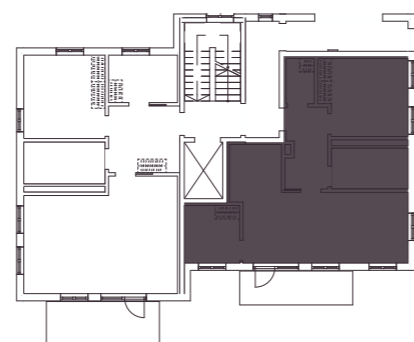
BRA-e: 5 m²

Total BRA: 72,1 m²

Etasje: 1

Soverom: 2

Markterrasse: 7,5 m²



Mot gårdsrommet



D-H0102

SMIÅ



BRA-i: 72 m²

BRA-e: 5 m²

Total BRA: 77 m²

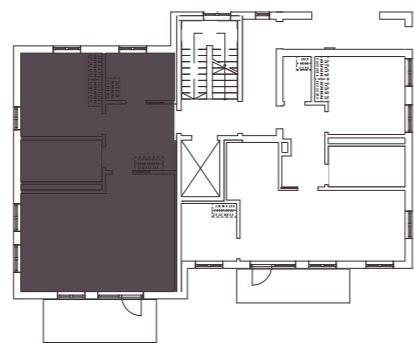
Etasje: 1

Soverom: 2

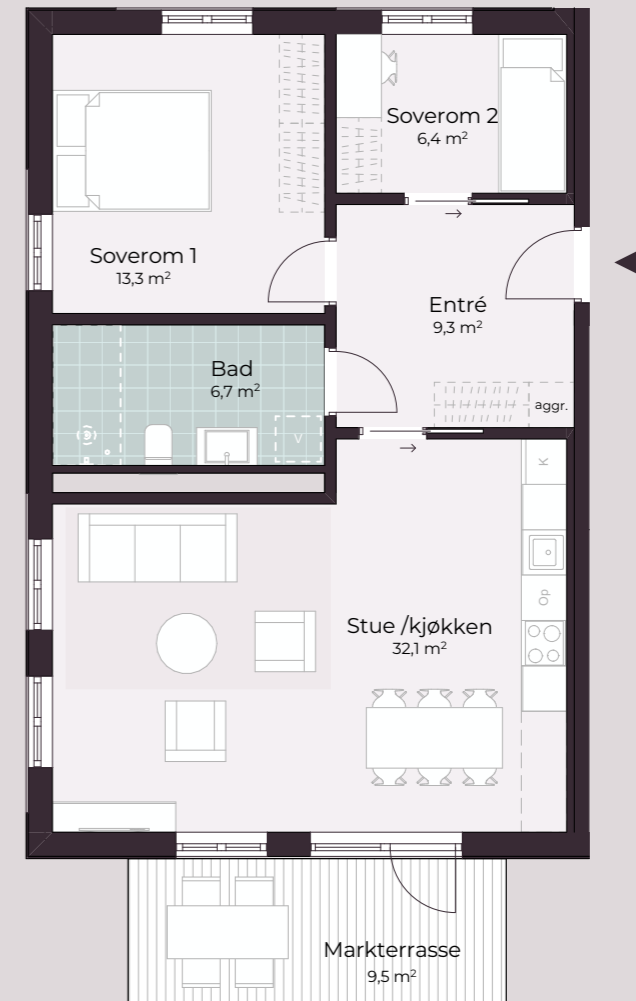
Markterrasse: 9,5 m²



Mot gårdsrommet



Oversiktsplan



Mot gårdsrommet



D-H0201

D-H0301

SMIÅ



BRA-i: 85,6 m²

BRA-e: 5 m²

Total BRA: 90,6 m²

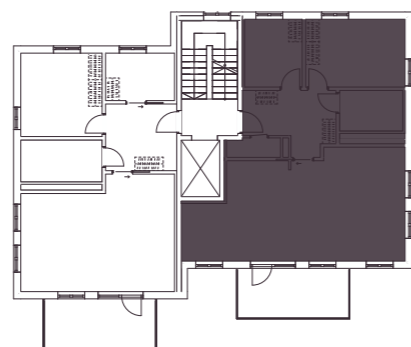
Etasje: 2 - 3

Soverom: 2

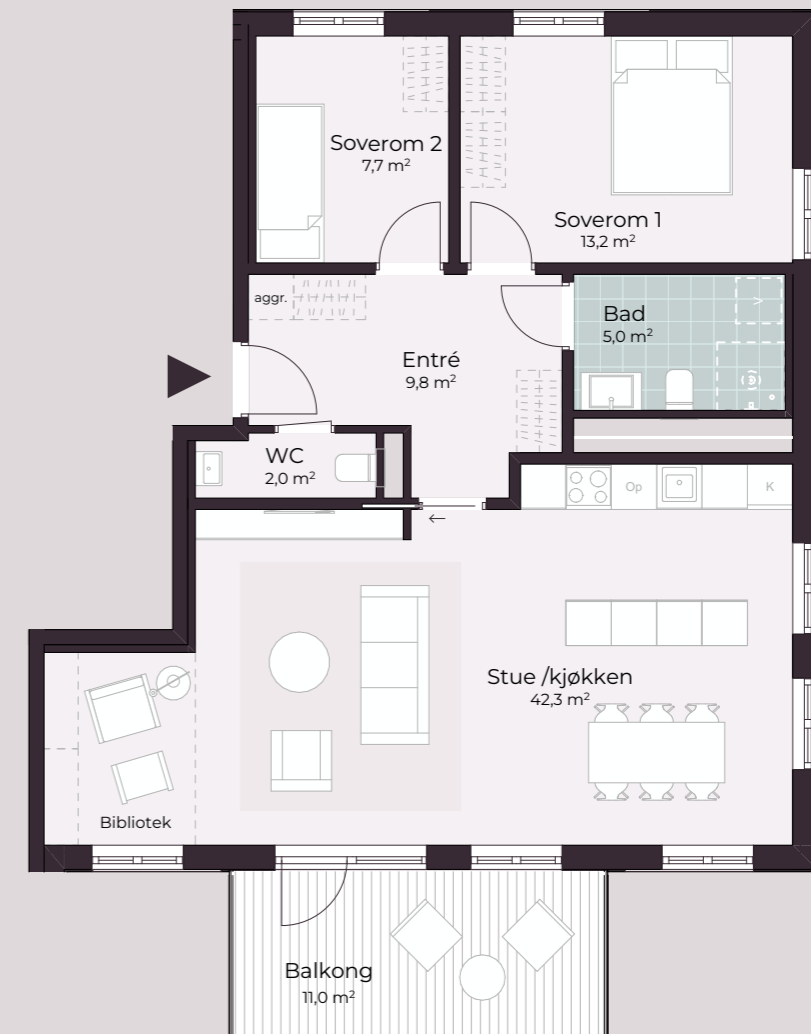
Balkong: 11 m²



Mot gårdsrommet



Oversiktsplan



Mot gårdsrommet



D-H0401

SMIÅ



BRA-i: 85,6 m²

BRA-e: 5 m²

Total BRA: 90,6 m²

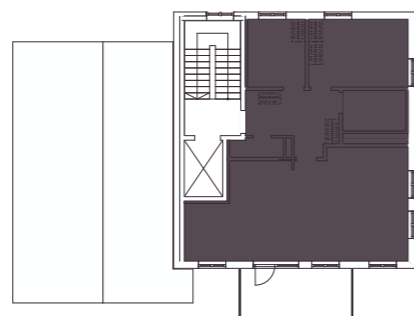
Etasje: 4

Soverom: 2

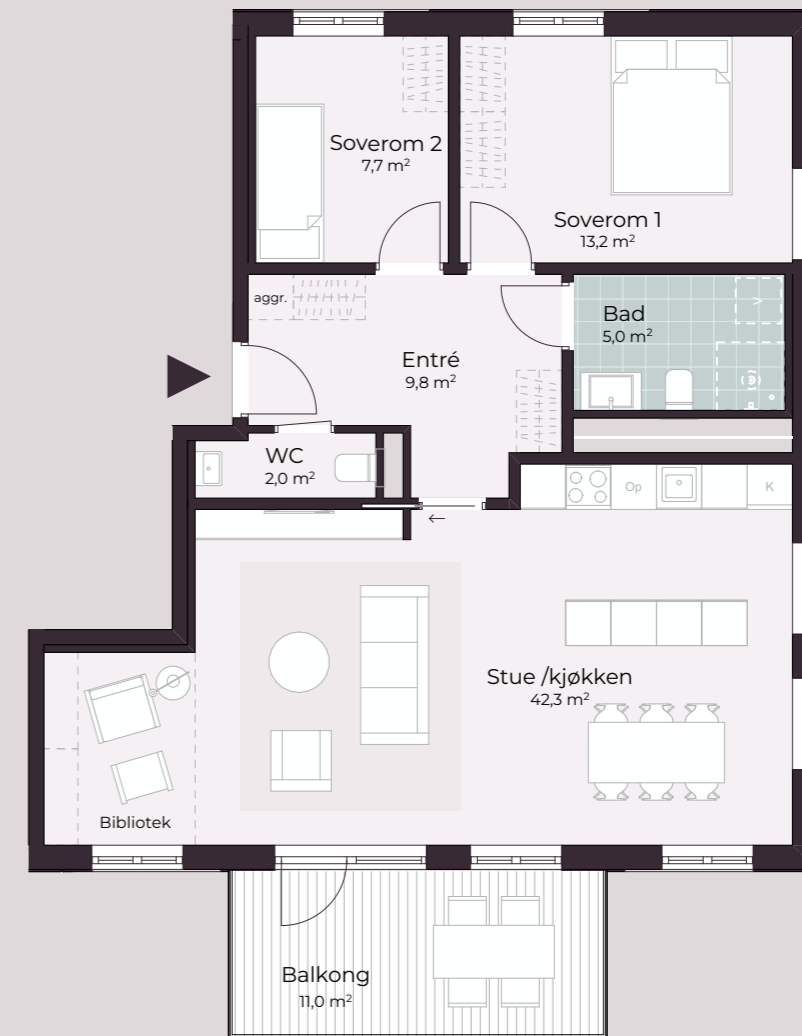
Balkong: 11 m²



Mot gårdsrommet



Oversiktsplan



Mot gårdsrommet



D-H0202

D-H0302

SMIÅ



BRA-i: 72 m²

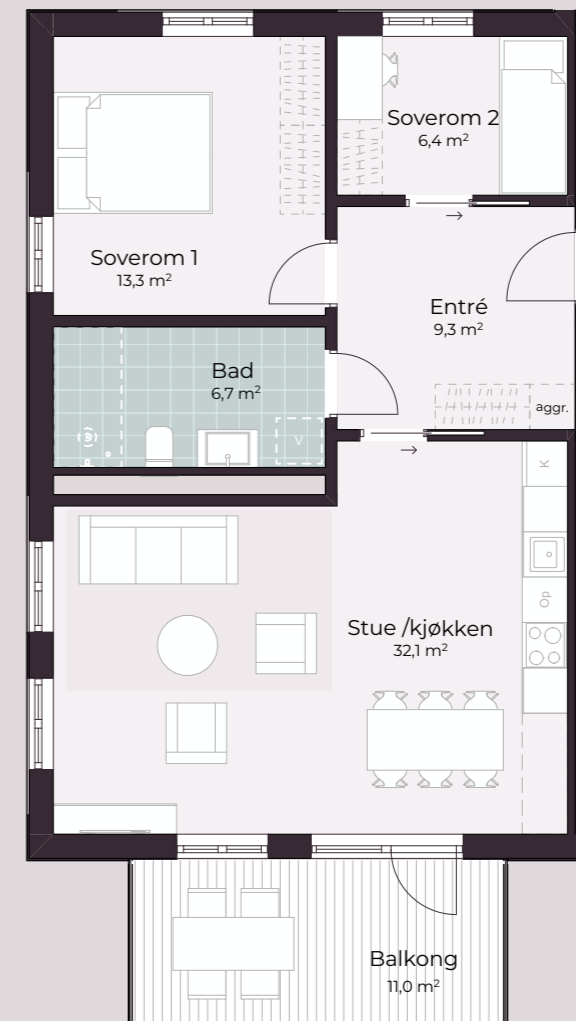
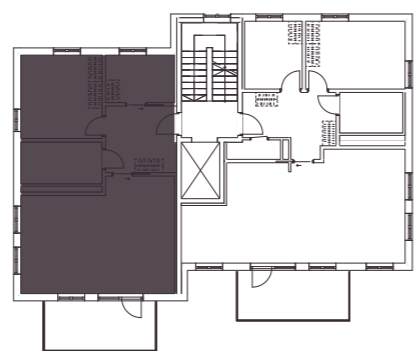
BRA-e: 5 m²

Total BRA: 77 m²

Etasje: 2

Soverom: 2

Balkong: 11 m²



Mot gårdsrommet



BATE
Bygger gode hverdager